

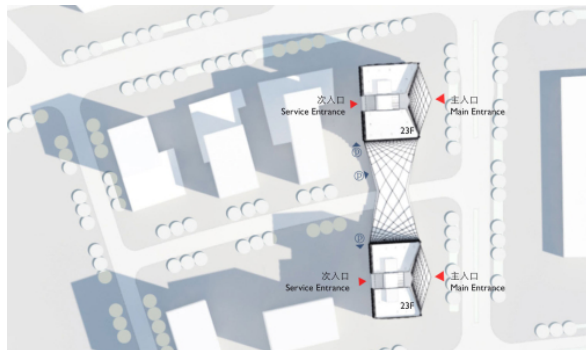
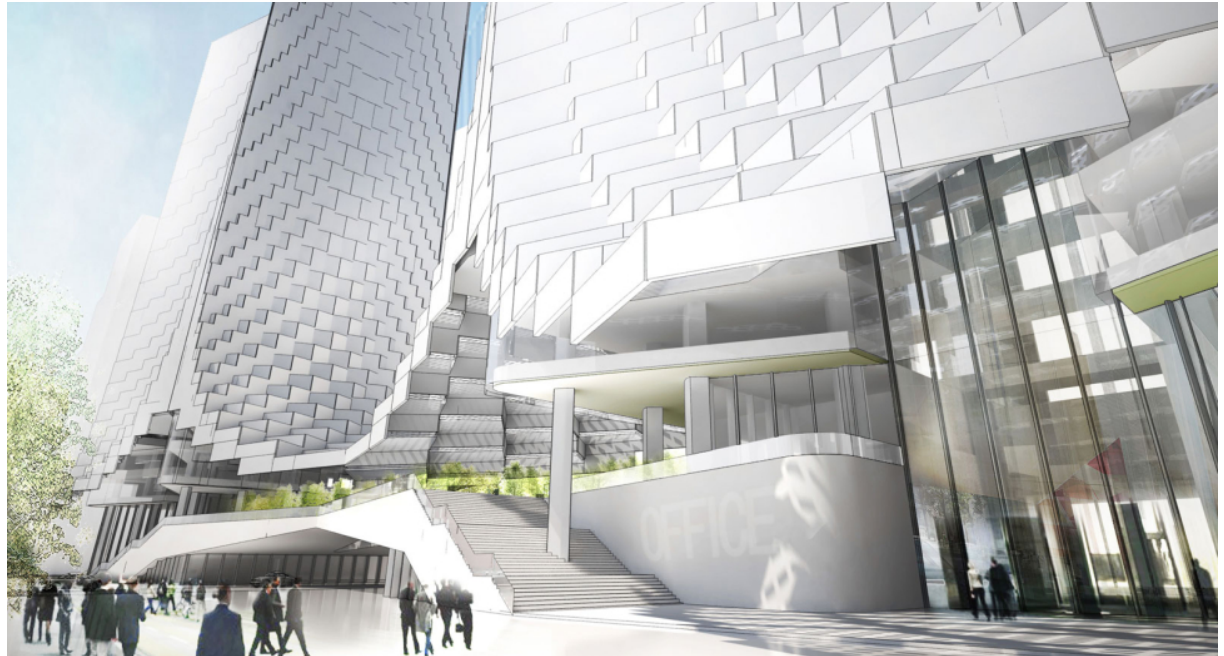
## Shenzhen Baoan

Shenzhen, 2012

Office/administration buildings, Residential/commercial buildings

In the southern Chinese production metropol Shenzhen, the new quarter Baoan is developed. It will offer attractive residences and retail areas. The new quarter is located close to the coastline and offers a view to near Hongkong.

In a competition schneider+schumacher and Shenzhen University jointly designed two office high-rises. The towers are connected by a public bridge, that leads over a road. The plan of the building maximises both, sea view, and incidence of daylight. With their parametric glass facade, and the balanced energy concept, the twin towers fit perfect into the new modern skyline of Baoan.



# Shenzhen Baoan

Shenzhen, 2012

Office/administration buildings, Residential/commercial buildings

Technical details:

Typology: Office/administration buildings,  
Residential/commercial buildings

Gross floor area: 65,000 m<sup>2</sup>

Procurement documentation: Competition

Service phases (HOAI): 1

